

The 2022 Kia Carnival MPV.



Movement that inspires



Vehicle Feature Tips

Many of the Tips presented below are covered in greater detail in the Owner's Manual, Multimedia System Manuals, Features and Functions Guide, and Quick-Start Guide hangtag supplied with your new vehicle.

Voice Recognition¹ and Bluetooth²

Using Voice Recognition

Improve Bluetooth² Voice Recognition (VR) performance by making a few simple changes to your phone contacts:

- Use full names (first and last names) vs. short or single-syllable names ("John Smith" vs. "Dad," "Smith Residence" vs. "Home").
- Avoid using special characters, emojis, and hyphenated names (@, &, #, /, -, *, +, etc.).
- Avoid using acronyms ("Emergency" vs. "ICE" or "In Case of Emergency") or words with all capital letters.
- Spell words completely; system will not recognize abbreviations ("Doctor Smith" vs. "Dr. Smith").
- Always wait for the beep before speaking any commands.
- When using VR to place a call, speak in a natural, moderate tone, with clear pronunciation. The system may have trouble recognizing commands if you speak too softly or too loudly.
- Open windows, sunroof, weather (wind/rain), or an A/C fan operating at higher speeds can interfere with VR accuracy.
- Your VR system may have difficulty understanding some accents or uncommon names.
- Press the talk button and say "Help" to get a list of available commands.

Pairing or Connecting Your Phone with Bluetooth²

- Select "Device Connections" in the infotainment display or "Call" button on the steering wheel to begin the pairing process if no phone has previously been paired.
- During the pairing process, please make sure you accept all requests for phonebook download and future auto-connection on your phone.
- To pair a second phone or subsequent phones, reference the manuals and guides supplied with your Carnival MPV as steps vary by infotainment system.

- If you experience any issues with auto-connection, try the following:
 - Reboot your phone (turn the phone off and then on).
 - Update the phone operating system to the most recently released version.
 - Delete the phone from the list of Bluetooth² devices on the infotainment system display¹ and delete Kia Connect from the list of Bluetooth² devices on your phone, and re-pair.
 - Ensure the phone has the Bluetooth² feature activated.
- If some contacts are not downloading to the infotainment system display, check to confirm that the contact has been entered correctly and that it has been stored under the categories (HOME, MOBILE, WORK, iPhone³) that are supported by the infotainment system display. Some contact categories (MAIN, PAGER, OTHER) may not be supported. If the number of contacts exceeds the maximum number allowed on the infotainment system display, contacts will be partially downloaded. Ensure that only the "phone contact list" is selected for contact download on your phone (not social media or email contact lists as these contacts may not download to the infotainment system display).
- Phone operating systems change frequently and some phones may have varying compatibility levels with the Bluetooth² system. For any questions regarding the features of your vehicle, please contact your preferred Kia dealer or contact Kia Consumer Assistance at 1-800-333-4542.

Other Bluetooth² Tips

- Bluetooth² reception is affected by carrier coverage and is dependent on the phone.
- If streaming audio through Bluetooth² from a device, ensure the listening volume on the device is turned up.

Smartphone Connectivity¹



Apple CarPlay³

Your vehicle offers you effortless command of your compatible iPhone[®] when you connect through Apple CarPlay[®] on your infotainment system display. This will enable you to make calls, send hands-free texts, access many of your favorite apps and music, and get navigation help with Siri[®] voice control.

To connect Apple CarPlay, visit <https://youtu.be/98TNWMOQfdU>



Android Auto^{TM4}

Your vehicle allows you to connect to your compatible AndroidTM phone via Android AutoTM on your infotainment system display. Through this feature, you can access music, your phone's dialer, navigation help, and more with an intuitive interface and voice commands. You can even access your phone through your steering wheel controls.

To connect Android Auto, visit <https://youtu.be/sTR4KotSOzU>

For select models equipped with wireless Apple CarPlay and Android Auto, visit <https://youtu.be/oUXXuAZAOEI>

Kia Access App^{*5}



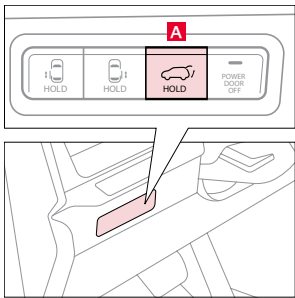
- Your cellphone and your vehicle have to be connected to a cellular network with a good wireless signal strength in order to use Kia Connect (formerly UVO link). If these conditions are not met, remote commands will fail or will take a long time to execute.
- To use Remote Start or Remote Start with Climate Control feature, all doors, hood and trunk/liftgate must be closed and locked. Remote Start or Remote Start with Climate Control feature will operate for about 10 minutes.⁶
- The quickest way to obtain an accurate vehicle status is by pressing the refresh icon on your app or customer web portal.
- Activate Remote Start or Remote Start with Climate Control feature at least 10 minutes before you plan to get into the vehicle. This will allow vehicle interior to reach a desired temperature.
- In order to preserve vehicle battery, Kia Connect will not work seven days after the ignition was last turned on. You will need to re-start your vehicle with a key fob in order to use Kia Connect again.

Feature Videos

To view a video on your mobile device, snap this QR Code or visit the listed website:
<https://www.youtube.com/KiaFeatureVideos>



Power Liftgate* / Smart Power Liftgate*



Opening from Inside the Vehicle:

Press and hold the Power Liftgate Open/Close button **A** to automatically open/close the Liftgate.

Smart Key: To open the Power Liftgate, press and hold the Liftgate button **B** until the Liftgate begins to open. Press and hold again to automatically close.

Auto Open/Close*: To automatically open and close the Power Liftgate/Sliding Doors, simultaneously press and hold buttons **C** (close) or **D** (open) for more than 3 seconds.

Keep in mind:

The feature must be enabled in vehicle settings first in order for it to function as outlined above.

Reminder:

Pulling the Liftgate upward by the handle or pressing the button a second time will interrupt the automatic opening of the Power Liftgate.

Opening/Closing from Outside the Vehicle:

To open the Power Liftgate automatically, press the Rear Hatch Release button **E** on the exterior of the Liftgate. Automatically close by pressing the Power Liftgate Close button **F**. To turn off the Auto Power Liftgate Close button function, press button **G**.

Power Liftgate Opening Height Adjustment:

The height setting of a fully opened liftgate (tailgate) can be adjusted by the following steps:

1. Position the liftgate manually to the preferred height.
2. Press the Power Liftgate Close button **F** more than 3 seconds.
3. A system beep will sound twice indicating the height setting has been saved.

The liftgate will then open to the set height. To change setting again, repeat steps 1–3.

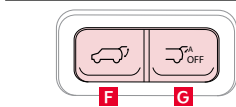
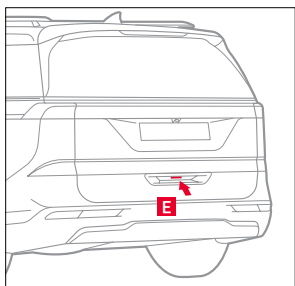
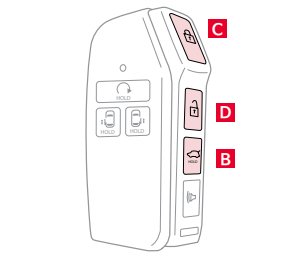
Smart Power Liftgate with Auto Open and Close*:

The Smart Liftgate with Auto Open and Close can open or close the Liftgate automatically when the driver approaches or leaves the vehicle. For Smart Liftgate with Auto Open and Close to operate, the Auto Open and Close features must first be enabled in vehicle settings.

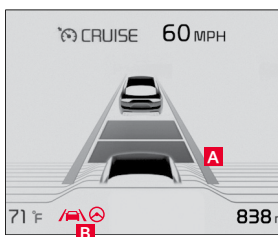
Automatically open: When the Smart Key is on your person and you are near the back of the vehicle, within close proximity, the hazard lights will blink and a chime will sound for about 3 seconds as an alert that the Smart Liftgate is about to open. Then the alert system will blink and chime two additional times before opening the Smart Liftgate.

Automatically close: When the Smart Key fob is on your person and you leave the vehicle, the chime will sound three times as an alert that the Smart Liftgate is about to close. Then the alert system will chime two additional times before closing the Smart Liftgate.

The Smart Liftgate with Auto Open and Close feature is off by default. To enable on some models, go to User Settings in the LCD Instrument Cluster modes. On other models, press the Setup key on the audio head unit, followed by pressing VEHICLE on the screen. Then press DOOR and SMART LIFTGATE.



Lane Following Assist (LFA)⁷






Lane Following Assist is designed to help ensure that the vehicle stays centered in its lane **A** by monitoring the detected lane markings ahead and adjusting the steering.

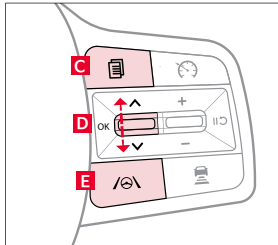
When driving, LFA can be switched on and off by pressing the Driving Assist button **E**. When turned ON, the instrument cluster indicator will initially illuminate white. It will remain white as long as the system does not detect the lane markers. When LFA detects the lane markers and can assist the steering, the LFA icon will illuminate green **B**.

LFA will operate only when these conditions are met:

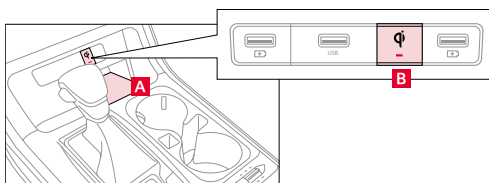
- LFA recognizes both sides of the lane markers the vehicle is traveling in.
- The vehicle is traveling slower than 120 mph.

LFA User Settings:

- With the vehicle at a standstill, the gear shift in Park, and the ignition on or the Engine Start/Stop button in the ON position, go to User Settings  in the Instrument Cluster, press the Mode button **C** on the Steering Wheel, and select User Settings.
- **To enable LFA:** From User Settings, press the Move (OK) button **D** up/down and Select Driver Assistance > Driving Assist > Lane Following Assist. Then press the OK button **D**.
- Some models access settings through the Vehicle Settings in the audio head unit. Press the Setup hard key on the audio head unit, then **VEHICLE**  on the screen to enter Vehicle Settings.
- Some vehicles have a Lane Driving Assist/Lane Safety button* on the Driver's Panel or the Steering Wheel . Press to activate LFA.



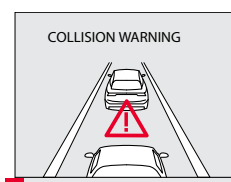
Wireless Smartphone Charging System*⁸



1. Enable Wireless Smartphone Charging System in the User Settings Mode on the Instrument Cluster's LCD.
2. Place a compatible smartphone on the center of the charging pad **A**.
3. The indicator light **B** may change to amber once the wireless charging begins.
4. Once charging is complete, the amber light may change to green.

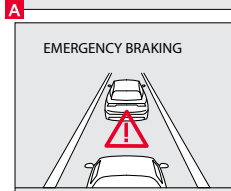
Requires Qi-enabled device or Qi-enabled case

Forward Collision-Avoidance Assist (FCA)⁷



FCA is designed to detect and monitor a vehicle ahead or detect a pedestrian in the roadway through front view camera recognition and front radar signals that warn the driver that a collision is imminent, and if necessary, temporarily apply emergency braking.

If FCA detects a potential collision, FCA emits an audible warning and visual alert on the instrument cluster **A**. If the system detects that the collision risk has increased, Forward Collision-Avoidance Assist (FCA) automatically applies the brakes to reduce your speed, potentially helping to reduce the effects of a possible collision.



FCA User Settings:

- FCA is ON by default in most Kia models. FCA can be activated or deactivated by going to the User Settings in the Instrument Cluster.
- To do so, make sure the vehicle is at a standstill, the gear shift is in Park, and the ignition or the Engine Start/Stop button in the ON position, then press the Mode button **B** on the Steering Wheel, then press the OK button **C** up/down and select User Settings > Driver Assistance > Forward Safety > and select Active Assist, Warning Only or Off.

Active Assist:

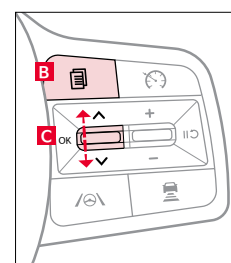
Vehicle will provide a warning (audible and visual) and apply the brakes if needed.

Warning Only: Vehicle will provide a warning only (audible and visual).

Off: FCA is off, no warnings or braking provided.

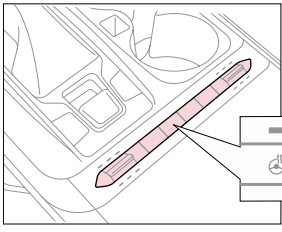
- To adjust FCA initial Warning Timing, go to User Settings  Driver Assistance > Warning Timing, then select an option:

- **Normal:** Maximizes the amount of distance between the vehicles before the initial warning occurs.
- **Late:** Reduces the amount of distance between the vehicles before the initial warning occurs.
- The default settings for Warning Timing is set to Normal. If the Warning Timing is changed, the warning time of other Driver Assistance systems may also change. FCA will become active when the:
 - Ignition is on or the Engine Start/Stop button is ON.
 - Vehicle is traveling faster than 5 mph.
 - Electronic Stability Control (ESC) is ON.



Buttons located on right side of steering wheel

Forward* / Reverse Parking Distance Warning (PDW)⁷



Forward/Reverse PDW is a supplemental system that is designed to assist the driver by chiming if any object is detected within the sensing area to the front, rear and side of the vehicle when moving forward or backing up.

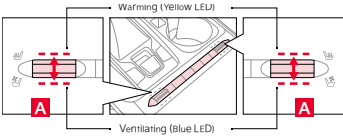
To activate PDW, press button **A** (LED illuminated). PDW is also activated when the ignition is ON and the gear shift is moved into R (Reverse). To deactivate PDW, press Reverse/Parking Safety **A** (LED not illuminated).

Auto Defogging System*

Auto Defogging is designed to reduce the fogging up of the inside of the windshield by automatically sensing the moisture of the inside of the windshield. The system will automatically change to defrost mode when needed.

Auto Defogging is set to ON by default. To cancel Auto Defogging, press the Front Defrost button for three seconds when the ignition is in on (ADS OFF icon will illuminate). To turn Auto Defogging on again, press the Front Defrost button for three seconds.

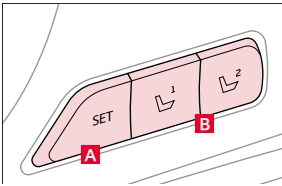
Seat Warmers* / Ventilated Seats*⁹



Buttons located below the Gear Shift

Press top/bottom of the button **A** once for high setting (3 LEDs lit). Press the button twice for medium setting (2 LEDs lit). Press a third time for low setting (1 LED lit) and again to turn OFF. Hold the button to turn off the Seat Warmers / Ventilated Seats.

Driver Position Memory System*¹⁰



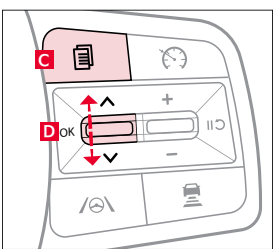
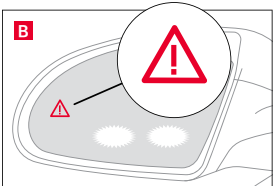
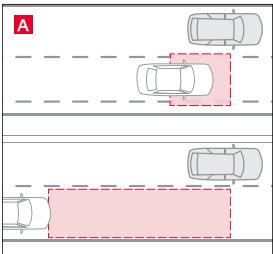
Buttons located on Driver Door Panel

The integrated system stores into memory the position of the Driver's Seat and the Outside Rearview Mirrors.

To store positions into memory, first place the Gear Shift into P (Park) while the Engine Start/ Stop button* is in the ON position. Then:

1. Adjust the Driver's Seat and the Outside Rearview Mirrors.
2. Press the SET button **A** on the control panel. System will beep once.
3. Press one of the memory buttons **B** within 5 seconds. The system will beep twice when memory has been stored.

Blind-Spot Collision-Avoidance Assist (BCA)⁷



Buttons located on right side of steering wheel

BCA uses rear corner radar sensors in the rear bumper to monitor and warn the driver in certain situations if it detects an approaching vehicle in the driver's blind spot area and before changing lanes. Initially, BCA provides Blind-Spot Collision Warning (BCW) when it detects a potential collision with a vehicle, emitting an audible warning and visual alert on the outside rearview mirrors. If the system detects that the collision risk has increased, BCA automatically applies the opposite side front brake to try and mitigate a potential collision.

1st-stage: When another vehicle is detected within BCW warning boundary **A**, an indicator will illuminate on the outside rearview mirrors **B**.

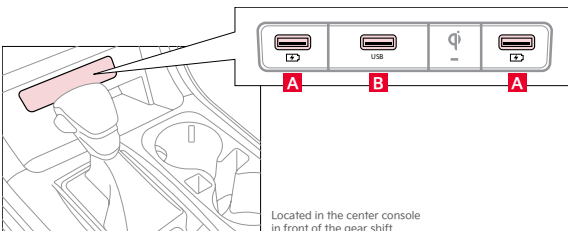
2nd-stage: When 1st stage warning is on and the driver activates a turn signal, a flashing indicator will illuminate on the outside rearview mirrors and the system will sound a warning.

3rd-stage: When 1st stage warning is on and the 2nd stage warning has already occurred, and the collision risk has increased, braking is applied to the opposite side front wheel and a visual warning occurs.

BCA User Settings:

- To turn BCA on: With the vehicle at a standstill, the gearshift in Park, and the ignition switch or Engine Start/Stop button in the ON position, go to the User Settings menu in the Instrument Cluster. To do so, press the Mode button **C** on the Steering Wheel, then select User Settings . Press the Move (OK) button **D** up/down and select Driver Assistance > Blind-Spot Safety > and then press the Move (OK) button **D**.
- Some models access settings through the Vehicle Settings in the audio head unit. Press the Setup hard key on the audio head unit, then **VEHICLE** on the screen to enter Vehicle Settings.
- To set BCA when in Blind-Spot Safety, select either:
 - **Active Assist:** BCA will provide a warning (audible and visual) and may activate Electronic Stability Control (ESC) and temporarily apply braking power.
 - **Warning Only:** Vehicle will provide a warning only (audible and visual).
 - **Off:** System is off, no warnings provided.
- To set the initial warning activation time, go to User Settings , then Driver Assistance, Warning Time and press the Move (OK) button **D**. You can adjust the warning timing to:
 - **Normal:** Maximizes the amount of distance between the vehicles before the initial warning occurs.
 - **Late:** Reduces the amount of distance between the vehicles before the initial warning occurs.

USB Charger Ports, Multimedia USB Port, Power Outlets, and AC Inverter*⁸



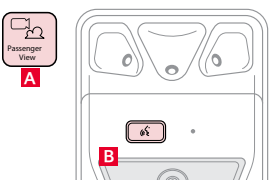
Located in the center console in front of the gear shift

USB Charger Ports **A**: Are located in the center panel and in the back of the seats and center console.

Multimedia USB Port **B**: Use the Aux port to connect audio devices and the Multimedia USB port to connect USB audio devices and smartphones.

AC Inverter*: 115V/100 watt power inverters are located in the back of the center console and in the luggage zone.*

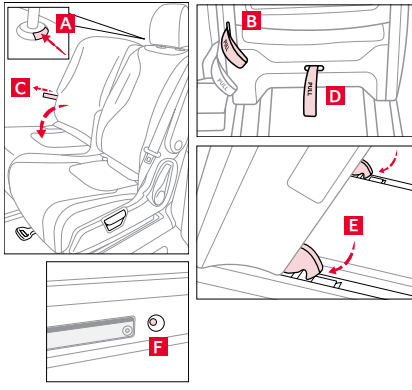
Passenger View* / Passenger Talk*¹¹



Passenger View: An in-cabin camera helps the front passenger talk with rear passengers while viewing them on the audio head unit screen. To use it, press the Passenger View icon **A** on the head unit screen.

Passenger Talk: Press the button **B** located on the overhead console to use the Passenger Talk, cabin intercom, function.

2nd-Row Tumble (Center) Seat*¹²



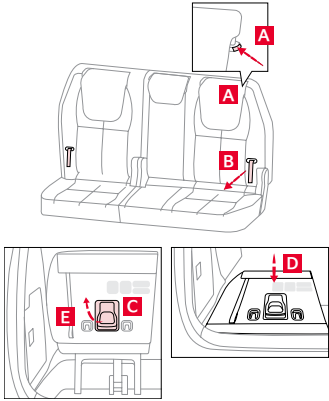
Removing Tumble Seat:

1. To provide more clearance, remove the headrest by pressing the release button **A** and pulling it up and out of the seat.
2. At the rear of the center seat, pull on the center seat left strap **B** to slide the seat forward.
3. To fold the seatback flat, pull on the strap **C** on the front of the seat.
4. To release the seat and tumble it forward, pull on the bottom center strap **D**, then remove the seat.

Installing Tumble Seat:

1. Make sure the front seats are all the way forward.
2. Place and align the seat properly on the floor anchors **E**.
3. Lower the seat and push down firmly until it clicks into place.
4. Ensure the seat is latched securely by checking the green indicator **F**.
5. Pull up the center seatback recline straps **C** or **B**, lift the seatback backward until it locks (clicks) into place.
6. Replace the headrest and return the seat belt to its proper position.

3rd-Row Seat – Folding and Stowing



Folding 3rd-Row Seat:

1. Fully lower headrest by pressing the lock release button **A** recessed in the seatback (raise headrest to access lock release button).
2. Pull seat folding strap located in the front of the seatback **B**.

Folding and Stowing 3rd-Row Seats*:

The rear seats can be folded and stowed in the luggage compartment for additional cargo space.

1. Fully lower headrests by pressing the lock release button **A** recessed in the seatback.
2. Pull release handle **C** in the middle of seatback.
3. The seat will fold down backwards towards the stow space. Push the seat down **D** to stow.

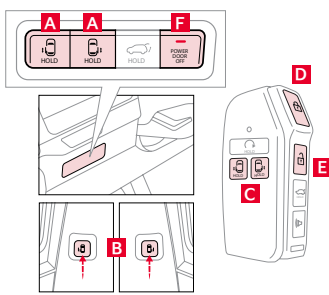
Raising 3rd-Row Seat:

1. Pull up on the release handle **C** to move the seat back to original position.
2. Press the seat down until it clicks to ensure that it is locked into place.
3. Pull on the strap **E** to raise the seatback.
4. Adjust the headrest either up or down until it is in the proper position for you.

Reminders:

- The seat straps on the front and back of the 3rd-Row Seat are for folding only.
- Do not stow the seat while the Seatback is folded down as this may cause damage to the mechanism.
- To raise or lower the other half of the 3rd-Row Seat, follow the same instructions as outlined above.

Power Sliding Doors



Automatic Open/Close:

Using the driver's panel controls, press the left/right Power Sliding Door buttons **A** on the driver's panel controls, the center pillars **B**, or on the key fob **C**.

Smart Key Auto Open/Close:

To automatically open and close the Power Liftgate/Sliding Doors, simultaneously press and hold buttons **D** (close) and **E** (open) for more than 3 seconds.

Keep in mind:

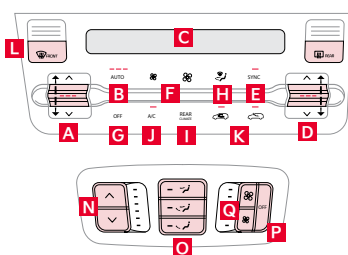
The feature must be enabled in vehicle settings first in order for it to function as outlined above.

Power Door OFF Button:

When button **F** is ON (not depressed), the power sliding doors and power liftgate can be controlled with the buttons on the center pillar trim **B** or liftgate.

The doors will also open/close automatically when pulling the handles from the inside or outside.

Automatic Climate Control*



- A** Driver's temperature control
- B** AUTO (automatic control) button
- C** Climate information screen
- D** Passenger's temperature control
- E** SYNC temperature control selection button
- F** Front fan speed control buttons
- G** Front air conditioning off button
- H** Front mode selection button

- I** Rear climate control on/off button
- J** A/C on button
- K** Air intake control buttons
- L** Front windshield defroster button
- M** Rear window defroster button
- N** Rear temperature control buttons
- O** Rear mode selection buttons
- P** Rear air conditioning off button
- Q** Rear fan speed control buttons



2022 Carnival MPV SX Prestige shown on cover. Images or graphics are for illustrative purposes only and may not reflect actual feature or operation. See the Owner's Manual for more detailed information, limitations, and conditions. ¹¹If equipped. ¹²Driving while distracted can result in a loss of vehicle control that may lead to an accident, severe personal injury, and death. The driver's primary responsibility is in the safe and legal operation of a vehicle, and use of any handheld devices, other equipment, or vehicle systems which take the driver's eyes, attention, and focus away from the safe operation of a vehicle or which are not permissible by law should never be used during operation of the vehicle. ¹³The Bluetooth® word mark and logos are registered trademarks owned by Bluetooth SIG, Inc. and any use of such marks by Kia is under license. A Bluetooth® enabled cell phone is required to use Bluetooth® Wireless Technology. ¹⁴Apple CarPlay, iPhone, and Siri are registered trademarks of Apple Inc., registered in the U.S. and other countries. CarPlay runs on your smartphone cellular data service. Normal data rates will apply. ¹⁵Android Auto vehicle user interface is a product of Google and its terms and privacy statements apply. Requires the Android Auto app on Google Play™ store and an Android compatible smartphone running Android 5.0 Lollipop or higher. Data plan rates apply. Android, Android Auto, and Google Play are trademarks of Google LLC or its affiliates. ¹⁶Purchase/lease of certain 2022 and newer Kia vehicles with Kia Connect (formerly UVO link) includes a complimentary 1-year subscription starting from new vehicle retail sale/lease date as recorded by the dealer. After your complimentary 1-year Kia Connect subscription expires, continued access to the full suite of Kia Connect services available on your Kia will require a paid subscription at the then current subscription rate or your use of certain Kia Connect features may immediately terminate. Use of Kia Connect is subject to agreement to the Kia Connect Privacy Policy (available at owners.kia.com/us/en/privacy-policy.html) and Terms of Service (available at owners.kia.com/us/en/terms-of-service.html). Kia Connect is transferable to subsequent owner during the original Kia Connect service term. Only use Kia Connect when safe to do so. Kia Access App is available from the Apple® App Store® or Google Play™ store. Kia America, Inc. reserves the right to change or discontinue Kia Connect at any time without prior notification or incurring any future obligation. Message and data rates may apply. Cellular and GPS coverage are required to use most features. Kia Connect features may vary by model, model year, and trim level. Features, specifications, and fees are subject to change. For more on details and limitations, visit www.kia.com or your authorized Kia dealer. Apple and App Store are registered trademarks of Apple Inc. Google and logos are trademarks of Google LLC. Kia Connect may currently be unavailable for Model Year 2022 and newer vehicles sold or purchased in Massachusetts; please see the Kia Owner's Portal for updates on availability. ¹⁷Do not use remote climate control or remote start if vehicle is in an enclosed area (e.g., closed garage) or a partially enclosed area without ventilation. Close all doors leading from adjacent living areas to the vehicle area before executing a remote climate control or remote start command. ¹⁸Driver-assist technologies are not substitutes for safe driving, and may not detect all objects surrounding vehicle. Always drive safely and use caution. ¹⁹Charging system only works with select devices. Refer to the vehicle's Owner's Manual for warnings and instructions. ²⁰Use extreme caution when using the seat warmers to avoid burns. Refer to the Owner's Manual for more safety information. ²¹Do not adjust the seating position while driving as this may cause you to lose control of the vehicle. ²²Distracted driving can result in a loss of vehicle control. When operating a vehicle, never use a vehicle system that takes your focus away from safe vehicle operation. ²³Never allow a passenger to ride in the tumble seat without first properly installing the headrest. ²⁴Kia received the fewest reported problems among mass market brands in the J.D. Power 2021 U.S. Vehicle Dependability Study, based on 2018 models. See jdpower.com/awards for 2021 details.